



ELKOSO[®]

AUTOMOTIVE MANUFACTURING SOLUTIONS



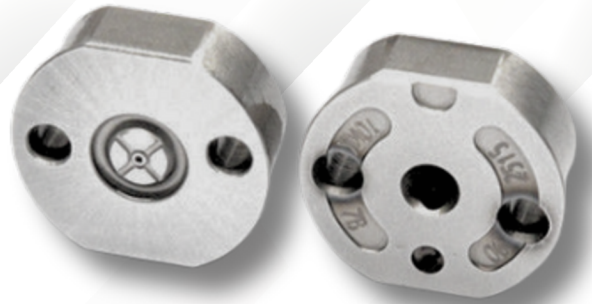
DENSO

COMMON RAIL VALVE



ELKOSO, as a manufacturer of these valves, ensures adherence to **DENSO's** stringent quality and performance standards.

Common Rail Valves are key components in the fuel injection systems of modern diesel engines. These valves play a crucial role in the precise control of fuel delivery to the engine's cylinders, contributing to better fuel efficiency, lower emissions, and enhanced performance.



Part Number	Fitting Product	Price 14,50€
• 02#	• 5212/5215/5226/5512/5513/7649/7281/6912/60/49/6231/295040-6320	
• 04#	• 5053/5220/5550/6590/6311/6950/5030/5950/78/50/7893/6490/6491 /5230/5150/7560/5160/519#/RE524361/RE524362/RE524364	
• 06#	• 5470/5510/6650/8480/6510/6511/6551/5321/7060/9709500-751(0)/9690	
• 07#	• 7761/23670-30300/23670-30080/23670-30050/5810/5881/5660/23670-0L050/ 8290/8220/8560/778X/23670-30280/23670-39185/23670-39215/23670-39315/23670- 39310/23670-30140/23670-30220/23670-09070/23670-30300/7760/7761/7751/7750/ 23670-39276/23670-0L010/23670-0L070/8740/23670-09360	
• 10#	• 5125/5241/5271/5284/5391/5653/5780/5960/59/63/5971/5972/6250/6350/6351/6353/6360/ 6364/6353/6593/6583/6971/6890/7172/8290/166005/X301/6593/6951/6952/6594/5550 /8310/6353/6350/6352/6491/6490/6492/RE529118/6310/6311/RE530362/5800/7060/6C1Q- 9K546-BC/ RE529149/6480/8940/RE543266/5600/1465A041/956x/1465A257	
• 31#	• 6222/6223/6691/6693/6700/6701/8100/8010/80/11/295040-6770	
• 32#	• 6770/6070/295040-6120/6120/6140/6280/6290	
• 33#	• 095000-5007	
• 29#	• 5511/5459/5489/5516/5511/5512/5517/5513/8-97603415-8/8-97603415-8	
• 34#	• 8633/8163/8300/6652/8971/2491/6303/4363/62	
• 36#	• 70/2542	
• 19#	• 5230/5341/5342/5344/5471/5472/5473/5474/54/75/5476/5480/5481/5500/5501/5502/6111/ 6300/6363/6373/6374/6382/6392/6420/6430/6900/8/900/8901/8902/8903/5600/5619/56 50/5690/593/1/6931/7257/7611/8170/8930/8970/23670 - 30050/vp12/5471/5470/5473 /5474/8900/8901/8902/6373/8903/0660/(8-98284393-0)/0660/6363/6364/6366/ (8-97609788-3)/534x/8-97602485-6	



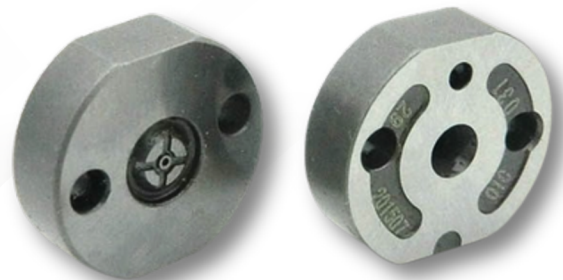
Part Number

Fitting Product

Price 14,50€

- 18#/MTXI
- BF23SFP6XF24
- SF03BGC2
- 501#
- 507#SF03
- 509#
- 504#/505#
- 517#

- 0260/5050/5450/5454/6860/6821/9720/778#/23/670-30240 (toyota)
- 5800/5801/6Q10C
- 23670-39429/01090/143
- 23670-30190
- 0760/0761/0321/6071/23670 - 30400/23670-0L110/23670-09380/054#/SM295050-0810/23670-0L090/294050-0521/23670-30400/0460
- G3
- 0231/0152/0491/1290/4351/0650/6022/3490/78/80/0591/0452/0352/1930/1570/4990/7193/7870
- 1440/23670-0L010/1550/8-98259287-0/1560/8-98259287-0





Part Number

- G4

Fitting Product

- 23670-0E010/23670-0E020/23670 -11010
23670 - 11020/23670-0E040/23670-0E050/ 23670 - 0E060
23670-0E070/295040-9440

Price 36,00 €



DENSO

DENSO Common Rail Valves are engineered for precision and durability, ensuring optimal performance in modern diesel engines. These high-quality valves provide consistent fuel delivery and superior control, enhancing engine efficiency and reducing emissions. Ideal for a variety of diesel applications, DENSO Common Rail Valves are trusted by industry professionals for their reliability and longevity.





ELKOSO[®]

AUTOMOTIVE MANUFACTURING SOLUTIONS



HEADQUARTERS

Bucharest, District 5, 7
Intrarea Bolboci Str.,
Office 52.
Romania

+40 312298408

info@elkoso.tech

ADMINISTRATION

Monastiriou 172
Menemeni, 54628
Thessaloniki
Greece

+30 2310 540231

office@elkoso.tech



www.elkoso.tech